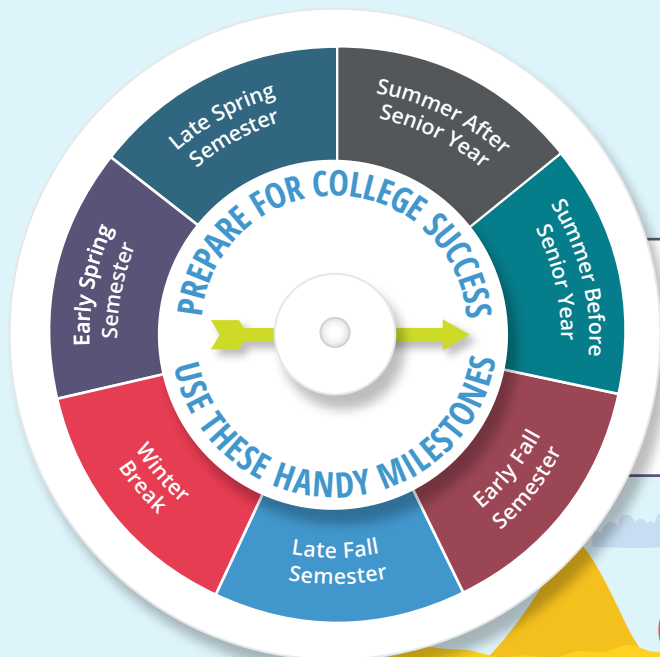


MILESTONES FOR COLLEGE PREPARATION- RISING SENIORS



**START
HERE**

**PICKING/
APPLYING TO/
ACCEPTING
A COLLEGE**

**VISIT
COLLEGE
CAMPUSES**

**SCHOLARSHIPS
AND OTHER
THINGS**

**TAKE
ADVANTAGE
OF SWE
PROGRAMS**

**SEND OUT
TEST SCORES
TO COLLEGES
YOU'RE
INTERESTED IN**

**APPLY
FOR A
SWENEXT
WE LOCAL
AWARD**

**SCHOLARSHIPS
AND OTHER
THINGS**

**GET TIPS
FOR YOUR
COLLEGE
APPLICATION
PROCESS**

**PICKING/
APPLYING TO/
ACCEPTING
A COLLEGE**

**SIGN
UP FOR
SATS/ACTS
OR PLAN
TO RETAKE
THEM**

**STANDARDIZED
TESTING**

**PICKING/
APPLYING TO/
ACCEPTING
A COLLEGE**

**TAKE
FINAL
STEPS
FOR YOUR
APPLICATION
PROCESS**

**SCHOLARSHIPS
AND OTHER
THINGS**

**MAKE PLANS
FOR THE FREE
APPLICATION
FOR FEDERAL
STUDENT AID
(FAFSA)**

**PICKING/
APPLYING TO/
ACCEPTING
A COLLEGE**

**KNOW YOUR
APPLICATION
DEADLINES**

**SCHOLARSHIPS
AND OTHER
THINGS**

**GET YOUR
STUDENT
AID**

**TAKE AP/IB/
CAMBRIDGE
EXAMS**

**STANDARDIZED
TESTING**

**LEVERAGE THE
SWENEXT
COLLEGIATE
VIDEO LIBRARY**

**SCHOLARSHIPS
AND OTHER
THINGS**

**KEEP AN EYE
OUT FOR YOUR
ACCEPTANCE
LETTERS AND
MORE**

**PICKING/
APPLYING TO/
ACCEPTING
A COLLEGE**

**PICKING/
APPLYING TO/
ACCEPTING
A COLLEGE**

**FOLLOW UP
ON YOUR
ACCEPTANCE
LETTERS**

**PICKING/
APPLYING TO/
ACCEPTING
A COLLEGE**

**APPLY FOR
A SWE
SCHOLARSHIP!**

**PICKING/
APPLYING TO/
ACCEPTING
A COLLEGE**

**DON'T FORGET
TO SEND
YOUR FINAL
TRANSCRIPTS**

**TIME TO
START
PACKING!**

CONGRATULATIONS! YOU'RE A SENIOR!

Just one more school year until you start college.

To set yourself up for college success, take a look at the typical milestones a high school senior goes through in the next ten months.

Keep this schedule handy to remind you of the activities and deadlines.

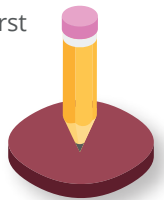


SUMMER BEFORE YOUR SENIOR YEAR

- A** Visit college campuses in person if you can, to get a feel for where you think you'd like to go.
- B**
 - Look into diversity or women in engineering programs at schools you're interested in. These programs (sometimes called SWEepovers or SWEvenings for SWE-exclusive events) allow prospective seniors to experience a day in the life of an engineering student. Each university with an engineering program should have their own SWE section and diversity programming. A quick internet search will help you determine who to contact for information.
 - Interested in attending SWE's Annual Conference? Apply for the Global Innovator Award, typically May through August. [Check out the program here!](#)
 - Have questions about college? [Ask a SWE member through the High School SWENext Facebook group page!](#)

EARLY FALL SEMESTER

- C** If you still need to, sign up to take the SATs/ACTs! Do this if you weren't happy with your SAT/ACT scores from your junior year.
- D**
 - Ask two teachers you're close to or whose classes you did well in for recommendation letters.
 - Start working on your applications and essays, especially for any schools that you're thinking about applying early decision/action (deadlines usually end up being in October/November) or rolling admissions. Send any first drafts of your essays to teachers, counselors, or even friends to look over for you to give you comments.
 - Request an unofficial copy of your transcript to make sure everything looks good to send to colleges.
 - If you have time on the weekends and are able, continue to visit schools you want to apply to but didn't get a chance to visit over summer.
 - [Check out our SWENextTV series](#) on the SWENext YouTube channel for a 4-part series on the college application process, which covers: what to consider when applying, resumes and letters of recommendation, college essays and The Common Application, and scholarships and financial aid.
- E** Apply for a SWENext WE Local Award September 1 - September 30. [Learn more here.](#)



LATE FALL SEMESTER

- F** Send SAT and/or ACT scores to all of the colleges you plan to apply to.
- G**
 - Continue working on applications and essays. Don't forget to keep track of application deadlines so you don't miss them!
 - Send official high school transcripts to the schools you're applying to by the deadline – this date will likely differ depending on the school. Make sure to send the paperwork for releasing your transcript to your guidance counselor a couple weeks before the deadline.
- H** The Free Application for Federal Student Aid (FAFSA) opens up for the next school year on October 1. If you need financial aid, start the application process as soon as you can.



WINTER BREAK

- I** Make sure to submit every application by the time they're due!
- J** Try to complete your FAFSA application by this time so you can receive your Student Aid Report by the time you receive college acceptance letters



EARLY SPRING SEMESTER

- K** • Keep an eye out for acceptance letters! Most schools will have deadlines for acceptance in April. Make sure to think long and hard about your choices!
- If you have a chance, go to the incoming freshman open house for the college(s) you've shortlisted, especially if you haven't visited them yet, just so you can make your most informed decision when you finally do accept.
- L** • **Check out the Collegiate Video Library** on the SWENext YouTube Channel. Information about SWE sections at the schools you've been accepted at may help you make up your mind if you have multiple options.



LATE SPRING SEMESTER

- M** • Take any AP/IB/Cambridge exams you've been in classes for – they can get you credit at most schools (requirements and number of credits vary by school).
- N** • Inform every college you were accepted or waitlisted for of your acceptance or rejection of their offers of admission and/or financial aid by May 1.
- Don't miss the deposit deadline for your college! It is usually also May 1.
- O** • Apply for a SWE scholarship! Freshmen applications are open March 1 through May 1. Remember to keep your grades up in your Sophomore to Senior year - scholarships need a 3.5 – 3.75 GPA in some cases!"
- Graduate! Congratulations, you did it!



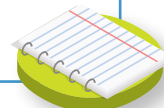
SUMMER AFTER YOUR SENIOR YEAR

- P** • Send official high school transcripts with all grades from your senior year to the college you chose as soon as they're available. You may have to submit the forms for this before graduation.
- Look into housing and roommate assignments as soon as you can.
- Register for classes the moment you're able! Good classes and time slots go quicker than you think!
- Join the SWE section at the college you will be attending. Look for a postcard from SWE with a code for free membership. (Offer is limited.)
- Remember to thank everyone who wrote recommendation letters for you!



QUICK TIPS FOR YOUR SWE SCHOLARSHIP

- SWE judges applications based on four main criteria - academic preparation, leadership and activities, work experience, and interest in engineering. **Make sure to highlight these areas on your application!**
- Who is eligible? **You're eligible if you:**
 - Identify as female
 - Are a freshman through graduate student
 - Are studying engineering full-time (exceptions made for re-entry/non-traditional students)
 - Are enrolled in an ABET-accredited program
 - Are a re-entry and non-traditional student



SWE CAN HELP FUND YOUR FUTURE!

Visit scholarships.swe.org to learn more!